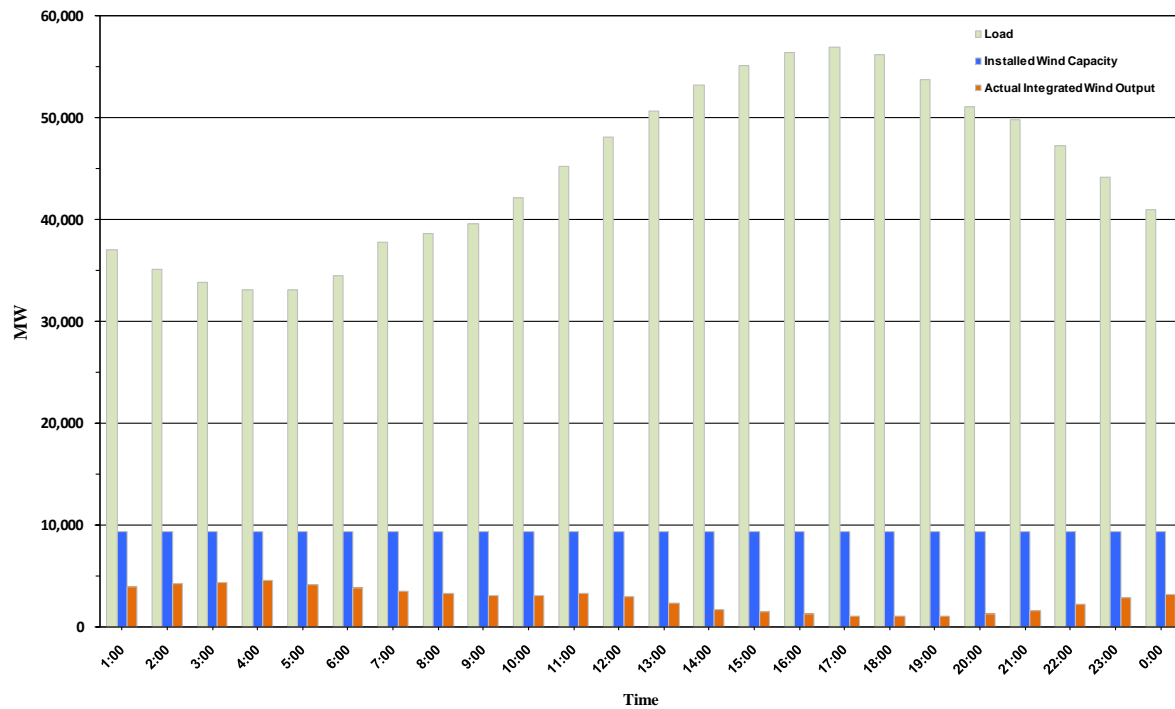




## ERCOT Grid Operations Wind Penetration Report: 09/10/10

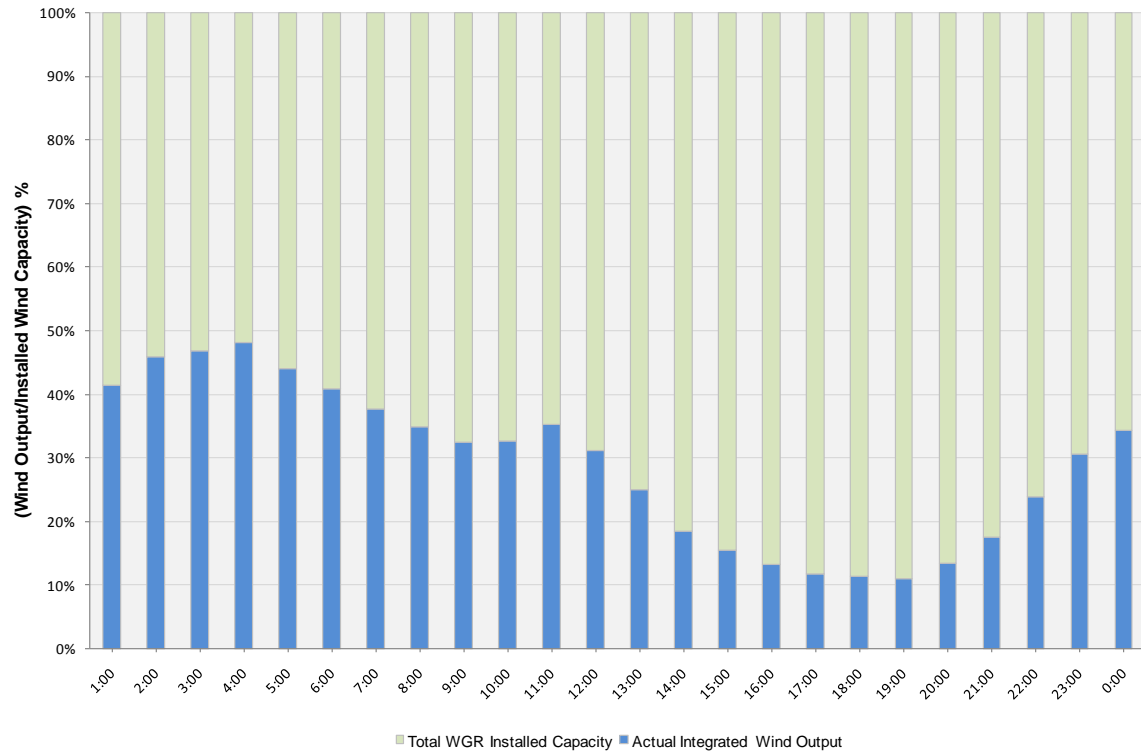
Peak Load	<b>56,950 MW</b>
Load Peak Hour	<b>17</b>
Wind Record 06/12/10	<b>7016 MW</b>
Max Wind value	<b>4630 MW</b>
Wind Peak Hour	<b>03:06:36</b>
Wind Penetration %	<b>13.90</b>

Hourly Average Actual Load vs. Actual Wind Output  
09-10-2010

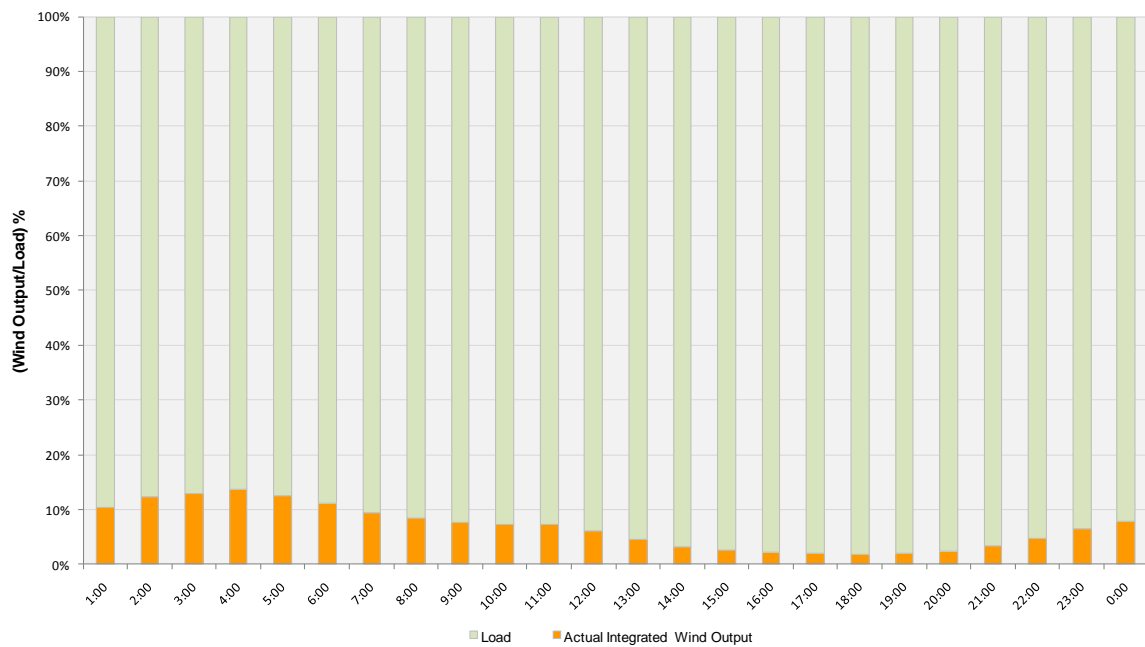




**Actual Wind Output as a Percentage of the Total Installed Wind Capacity**  
**09-10-2010**



**Actual Wind Output as a Percentage of the ERCOT Load**  
**09-10-2010**





**ERCOT Load vs. Actual Wind Output 09/03/10 - 09/10/10**

